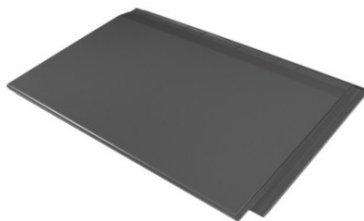


TRACTILE ECLIPSE

PRODUCT SPECIFICATIONS



Eclipse Tile - TR-EC-FT1001



Dimensions (mm): W x H x D

- Physical

1105 x 690 x 71

- Exposed

1050 x 560

Exposed tile surface (square meter)

0.588

Weight (kilogram), with single hook

8.100

Profile

Roughed-up

Eclipse Solar Tile - TR-EC-ST1001-PV76M



Dimensions (mm): W x H x D

- Physical

1105 x 690 x 71

- Exposed

1050 x 560

Exposed tile surface (square meter)

0.588

Weight (kilogram), with single hook and no liquid in tile

19.56

Profile

Solar PV glass

Capacity (watt peak)

95

Capacity (litres)

1.0

40 tiles heat daily 120-200 litre water to

30 ° - 35 ° C

Eclipse Thermo Tile - TR-EC-ST1001-T



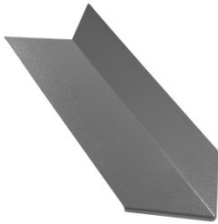
Dimensions (mm): W x H x D	
- Physical	1105 x 690 x 71
- Exposed	1050 x 560
Exposed tile surface (square meter)	0.588
Weight (kilogram), with single hook and no liquid in tile	19.56
Profile	Thermo glass
Capacity in litres	1.0
40 tiles heat daily 120-240 litre water to	50 ° - 75 ° C

Eclipse Ridge Tile - TR-EC-RT0001



Dimensions (mm): W x H x D	
- Physical	1105 x 395 x 95
- Exposed	1050 x 395
Exposed tile surface in square meter	0.415
Weight (kilogram)	3.87
Profile	Roughed-up
Pitch (degrees)	5 to 40

Eclipse Hip Tile - TR-EC-HT0001



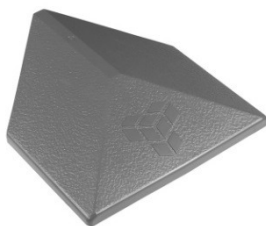
Dimensions (mm): W x H x D	
- Physical	820 x 390 x 55
- Exposed (max)	750 x 395
Exposed tile surface (square meter)	0.293
Weight (kilogram)	2.24
Profile	Roughed-up
Pitch (degrees)	5 to 40

Eclipse Barge Tile - Left & Right - TR-EC-BR0001 & TR-EC-BL0001



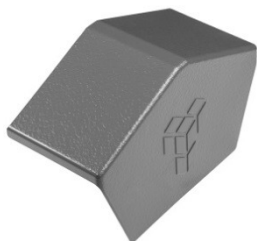
Dimensions (mm): W x H x D	
- Physical	595 x 200 x 200
- Exposed (horizontally max)	570 x 200
Exposed tile surface (square meter)	0.114
Weight (kilogram)	3.00
Profile	Roughed-up
Pitch (degrees)	5 to 90

Eclipse Ridge End Cap -TR-EC-RE0001



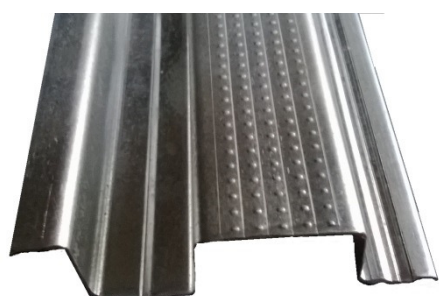
Dimensions (mm): W x H x D	
- Physical	467 x 410 x 100
- Exposed (horizontally max)	280 x 410
Exposed cap surface (square meter)	0.115
Weight (kilogram)	2.20
Profile	Roughed-up
Pitch (degrees)	5 to 40

Eclipse Barge End Cap - TR-EC-BE0001



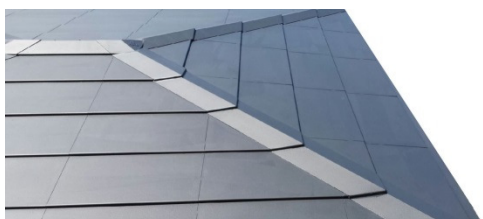
Dimensions (mm): W x H x D	
- Physical	190 x 410 x 100
- Exposed (horizontally max)	280 x 395
Exposed cap surface (square meter)	0.111
Weight (kilogram)	2.20
Profile	Roughed-up
Pitch (degrees)	5 to 40

Eclipse Batten - TR-EC-BT0001-3000



Dimensions (mm): L x W x H	3000 x 75 x 20
Material:	Zincalume steel
Material thickness (mm)	0.75
Maximum span width (mm)	1200
Weight (kilogram) per meter	0.8

ROOF SPECIFICATIONS



Eclipse Roof

Pitch in degrees:	
- standard	10 to 45
- minimum using sarking + silicon	5
Distance between battens (mm)	560
Height from truss to top of roof (mm) at 22.5 degree pitch for tile + batten:	
- the top row of tiles excluding ridge tile	67
- all other rows	87

ROOF COLOURS

Tractile Eclipse material can withstand UV exposure well. As with any product under the Australian sun, UV damage might happen over time, but will be aesthetic and not structural. Some architects request unpainted product so it can weather.

However, as a general precaution and to maximise



durability it is recommended to paint the product for UV protection. The Tractile raw material is provided in batches of 20 tons with some colouring variation between batches. Paint companies are consistent with their pigmenting and warrant their paint for 10 years to 40 years depending on the type. For large orders we can add UV blocking additives into the material as well as colour pigments. However, this alters the chemistry of the material and requires a customised product formulae to maintain strength.

A Tractile Eclipse roof can be ordered in any colour based on colour code provided. Consideration should be given to paint that allows for collection of clean rain water from the roof for domestic usage.

ECLIPSE SOLAR PANEL SPECIFICATION

Physical - tested static back load pressure (1h) - tested static front load pressure (1h)	2'400 N/m ² 2'400 N/m ²
Glass PV cells Junction box Plug connector type Cable length / cross section	Tempered 3.2mm solar glass (safety glass II) 32 mono-crystalline 5" silicon cells (125mm x 125mm) 131mm x 9mm x 9mm MC4 2 x 800mm / 4mm ²
Electrical data at STC * - nominal power @ STC (Pmax) - voltage @ maximum power point (Vmpp) - current @ maximum power point (Impp) - open circuit voltage (Voc) - short circuit current (Isc) Temperature Co-efficient	76Watt 17.73V 5.539A 20.384 5.727Isc -0.37%/K -Pmax -0.241%/K - Voc +0.033%/K -
General electrical Data - maximum system voltage - maximum module reverse current (IR) - operating temperature range - nominal operating cell temperature (NOCT)	1000V DC 12A -40degrees C to + 85degrees C 46 +/- 2degrees C

* STC = Standard Testing Conditions (irradiance 1000W/sqm; module temperature of 25 degrees C, spectrum at air-mass of AM 1.5)

DISCLAIMER

The information contained in this brochure is as far as possible accurate at the date of the publication. However before designing a particular application, Tractile recommends that you obtain qualified expert advice confirming the suitability of the product and information in question for the proposed application. Tractile disclaims all liability including but not limited to negligence for any loss or damage resulting from the use of the information provided in this brochure.